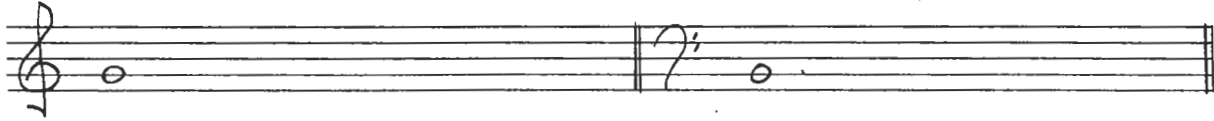


Name: \_\_\_\_\_

### MUSTH 212: Scale Assignment (From Kostka, Ch. 2)

1. Using the pattern C - D - E - G - A as the model, notate pentatonic scales starting on the given notes:



2. Notate the whole-tone scales starting on the following notes:



3. Notate the following modal scales:

Dorian

Mixolydian



Lydian

Phrygian



Aeolian

Lydian



Dorian

Phrygian



Name: \_\_\_\_\_

4. Notate the following octatonic (diminished) scales:

One beginning F# - G

One beginning Ab - Bb



One beginning D - Eb

One combining a°7 with b°7



One combining d#°7 with e°7

One combining a#°7 with e#°7

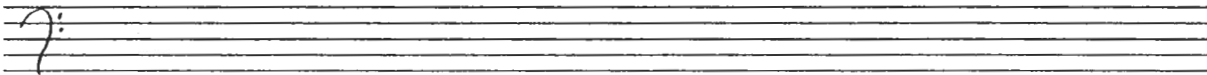


5. Notate the scale and label every major, minor, augmented and/or diminished triad available in the following scales:

Pentatonic on A



Whole-tone on B



Octatonic beginning E - F

